

Pittwater Council is proudly committed to promoting school zone road safety awareness, encouragement and enforcement.

As a school community we all need to work together to keep our kids safe on the roads around Elanora Heights Public School. By following the road rules we can help make school drop off and pick up safer for our children.



Student term dates for 2016 are:

Term 1: Wednesday 28 January to Friday 8 April

Term 2: Tuesday 27 April to Friday 1 July

Term 3: Monday 19 July to Friday 23 September

Term 4: Monday 10 October to Tuesday 20 December

Teachers return a day earlier terms 1, 2 and 3 and stay for an extra two days at the end of term 4.

Pupil free days are considered gazetted school days and school zone offences still apply.

Pittwater Council would like to thank the Elanora Heights Public School P & C Committee for their assistance in creating this road safety brochure.

Please note that fines are subject to change without notice. All information is correct at the time of printing.

Penalties listed apply to offences in school zones on school days between 8am-9.30am and 2.30pm-4pm, or as stated on signs.

PO Box 882 Mona Vale NSW 1660

Phone: (02) 9970 1111

Email: pittwater_council@pittwater.nsw.gov.au

www.pittwater.nsw.gov.au

Environmental Compliance
Printed on recycled paper

October 2012
EGRSMC12

Walking to school

Walking to school

Walking to school is an easy way for you and your child to achieve the recommended amount of physical activity needed each day. It's fun, friendly and easy!

Always be looking and listening for traffic when crossing the road. Before stepping out onto the crossing, make sure that the driver has seen you and that the vehicle has made a complete stop.

When walking to school use the opportunity to talk about where and when it is safe to walk across the road, what to look and listen for and why they have to keep checking until they are safely across the road or driveway.

Remember to **STOP! LOOK! LISTEN! THINK!** before you cross the road.

Pedestrian crossings

The pedestrian crossings outside Elanora Heights Public School on Elanora Road and Anana Road are supervised by Roads and Maritime crossing supervisors in the mornings and afternoons.

It is important for both parents and children to follow the direction of the crossing supervisor.

When driving, do not park or stop on or near a marked pedestrian crossing at any time. Pedestrian crossings must be kept free of vehicles so pedestrians can be visible to traffic and safely cross the road.

Penalties exceed \$496 for stopping on or near a crossing and four demerit points

Travelling to and from school by car, bus or bike

Travelling by car

Children aged under seven years of age, must be restrained in a suitable child restraint or booster seat when travelling in a vehicle, regardless of the height or weight of the child.

School-aged children should always travel in the back seat of your vehicle and be firmly buckled in a seat belt or child restraint.

The safest way for children to enter and exit your vehicle is on the footpath side of the road.

Encourage your children to be ready to be picked up; have their bags off their back, be standing back from the kerb, and to be watching for your vehicle to pull into the P2 parking area.

Travelling by bus to school

Children travelling on the school bus reduces the number of vehicles that are parking on the streets around Elanora Heights Public School during the peak school zone periods.

Speak to your children about bus safety while entering or exiting the bus or when travelling on the bus as a passenger.

Meet your child at the bus stop after school and don't call them across the road.

Riding to school

Children under 12 years of age are permitted to ride their bike on the footpath. When riding, watch for vehicles entering and exiting driveways and remember that pedestrians have right of way on footpaths.

It is compulsory for all bike riders to wear a helmet which meets Australian Standards. Helmets must be properly fitted and fastened at all times.

Ensure that your child has read and understands the Elanora Heights Public School Bicycle Policy.

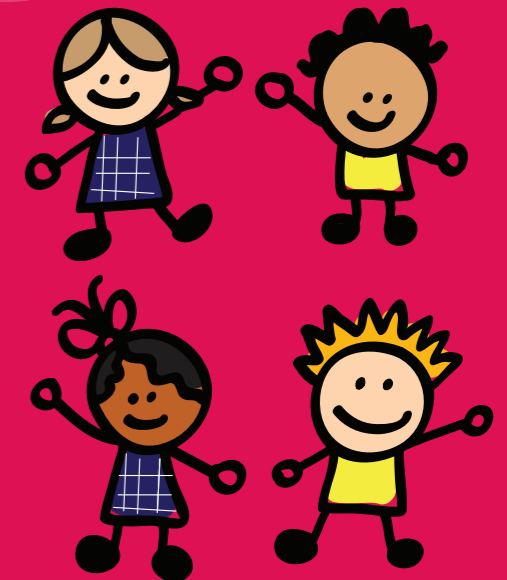


Elanora Heights Public School

RESPECT ACHIEVEMENT RESPONSIBILITY

Road safety around Elanora Heights Public School

A joint road safety initiative between Elanora Heights Public School and Pittwater Council



Safe roads in Pittwater



Where and how to legally park

P2 minute parking

P2 minute parking operates in the stop, kiss and leave zone on Elanora Road. You may leave your vehicle to help your child safely enter or exit the vehicle but must remain in the vicinity of your vehicle at all times. You cannot stay in the P2 parking area for longer than **2 minutes**.

Use your indicators so that other vehicles know when you are moving in and out of the P2 parking area.

If no parking spaces are available in the P2 parking area please keep driving and do not stop your vehicle. No stopping areas can not be used to queue in to wait for a parking space.

P2 parking areas allow parents to make quick drop off or pick ups of their children and allow for a high turnover of vehicles. Please do not park in the P2 parking area early while you wait for your children at the end of the school day.

Stop, kiss and leave

The stop kiss and leave zone for Elanora Heights Public School is located on the school side of Elanora Road. You are permitted to stop and allow passengers to enter or exit your vehicle in these zones.

Stop your vehicle as close as possible to the top of the zone, allowing vehicles behind you to enter the zone.



Where else can I park?

Parking on Elanora Road

There are several parking options available on Elanora Road, all with different parking restrictions. Ensure you check the signs and the time when parking your vehicle.

90° rear to kerb parking operates on Elanora Road with the following time limits depending on the time of day and day of the week:

- 3P 8.30am - 6pm Monday - Friday and 8.30am - 12.30pm Saturday.
- 1/2 P 7.30am - 10am and 2.30pm - 6pm school days.
- 2P 10am - 2.30pm school days, 8.30am - 6pm non school days and 8.30am - 12.30pm Saturday.

15 minute parking operates on Elanora Road opposite the school between 8am - 9.30am and 2.30pm - 4pm school days only.

P2 minute parking operates in the stop, kiss and leave zone. Only use the P2 parking area for quick drop offs and pick ups of your children.

Additional long term parking is available on Elanora Road and is only a short walk away from the school. Please check all road markings and signs when parking your vehicle.

Georgina Avenue and Allawah Road

A small number of unlimited parking spaces are available on Georgina Avenue and Allawah Road. You can park here and walk your children to the school entrance and pick them up here after school.

Please be aware of where you park and do not block driveways or park illegally.



Where not to park

No stopping: what does this mean?*

No stopping signs are in place along Elanora Road and Anana Road. Vehicles cannot stop in a no stopping zone for any reason, no matter how short and no part of your vehicle may encroach in a no stopping zone at any time.

No stopping areas keep the sight line clear for both drivers and pedestrians.

Bus zones: what does this mean?*

The marked bus zones on Elanora Road are areas where you are not permitted to stop your vehicle as indicated by the signage. Bus zones need to be kept clear for buses to enter and exit safely and to provide a safe place to set down and pick up school children.

Driveways

At drop off and pick up times, please be considerate to the residents that live around the school.

Please do not park your vehicle across any driveways. Driveways must be kept clear to allow residents to leave and enter without any inconvenience.

When travelling in the school zone around Elanora Heights Public School, please do not use private driveways to turn around as this increases the congestion of vehicles in the school zone and puts children at risk of reversing vehicles. Take the extra minute or two to drive around the block to leave the school zone.



Dividing Lines

A continuous double dividing line runs down the middle of some parts of Elanora Road and Anana Road.

The driver of any vehicle, when parking, must position their vehicle at least 3 metres from the continuous dividing line according to Road Rule 208 (6). This is to allow other vehicles to safely pass the parked vehicle without crossing over the double dividing lines towards on coming traffic.

No vehicle is permitted to cross double dividing lines or perform a U-turn at any time. Crossing double dividing lines puts children and other road users at risk and reduces sight visibility for drivers and pedestrians.

Vehicles stopped ahead of you may be waiting to turn, be stopped at the pedestrian crossing or waiting behind a stopped bus that is dropping off or picking up school children.

The traffic ahead of you has stopped for a reason. Please be patient and wait for traffic ahead of you to move forward and do not cross the dividing lines at any time.



Photos showing dividing lines and examples of No Stopping areas on Anana Road and Elanora Road..

Fines apply for parking longer than indicated.

Penalties exceed \$298 and two demerit points*.

Choose safety over convenience. Park legally at all times.